

**CHARD**  
Twinned with  
Helmstedt, Morangis and Sosa

# Chard

*Town Guide*  
2011-2012

*At home in Chard...*

**HENRY**

*...and in over 6 million  
homes around the world!*



Numatic International Limited, Chard, Somerset, TA20 2QB. Tel: 01460 68600 Fax: 01460 68458  
[www.numatic.co.uk](http://www.numatic.co.uk)



As Mayor of Chard I hope you will find this publication useful whether you are a resident or just thinking of visiting our historic market town.

Chard has a population of around 14,000 and, at an altitude of 121 metres, it is the highest town in the county of Somerset, England. It is situated on the main A30 road close to the borders of Devon and Dorset, surrounded by beautiful countryside with a wealth of interesting places to visit.

No visit to Chard would be complete without a visit to our museum to discover why Chard is the birth place of powered flight, about the early development of artificial limbs and many other facets of Chard life over the ages. You can also learn about the Chard Lace Riots which give an interesting insight into Chard's industrial past.

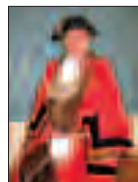
These are exciting times for Chard as the town embraces 'change' in all its forms.

# *Welcome from the Mayor of* **Chard**



As lace-making has almost completely disappeared it has been replaced by other industries with many leaning towards aviation once again and space exploration. We are also the home of the 'Henry' cleaner.

We are fortunate to have at the centre of our town the historic Guildhall, recently restored and modernised. Here you can find the Tourist Information Centre where information may be obtained on local attractions, hotels, bed and breakfast accommodation - and much more.



I hope you, as residents, are as proud of the town as I am. The Deputy Mayor and my fellow Councillors all join me in saying it is a privilege to be a member of this wonderful historic Council.

I do hope you find this guide useful.

*Jill Shortland - Mayor*

With around 14,000 inhabitants, Chard has long been a place of some importance and is situated in the southern part of Somerset close to the borders of both Devon and Dorset. As an ancient borough it dates from the 13th century. It became a major cloth-making town in the Middle Ages and later, in the last century, the manufacture of machine lace became the principal industry. To support this, considerable skill in light engineering developed and this has served the town well, generating a number of specialised offshoot industries that flourish in the present day.

Agriculture has also been the basis of many Chard industries through the ages. Communications based on the road network have long been good. Ancient roads ran from east to west, first as hilltop ridgeways and then as predecessors to the present A30. In the 18th - 19th centuries the Chard Turnpike Trust constructed and maintained a network of roads within a 10 miles (16 km) radius. Water-borne goods traffic generated a need for a south to north oriented canal and a branch railway succeeded this. These are now gone but the A358 road link, north to the M5 motorway, could be called the modern successor.

Chard has many interesting buildings to show the visitor, including a fine parish church and a prestigious museum displaying items from Chard's famous people and past. Many present cultural activities are held in the Guildhall/Town Hall complex which was once the Corn Exchange. As in many west country towns the main and most spectacular event of the year, in October, is the Carnival which consists of a procession of exuberant and brilliantly lit floats. This event dates back to the early 20th century and has developed from the activities of earlier annual market fairs. A grammar school was founded in Chard in 1671. This still continues as a private school but the town also offers state schooling up to the age of 18. Chard is, in

short, an interesting town to visit, an excellent one in which to live and one that is enhanced by its setting beside the beautiful and historic landscape of the Blackdown Hills, a designated area of outstanding natural beauty.

## THE FIRST CHARDS

A circular earthwork on the hill to the west of Chard is the site of an Iron Age defended settlement. A burial urn of this period was found at South Chard and can be seen at the museum. Much later the conquering Romans constructed a military road (now called the Fosse Way) along the Windwhistle Ridge to the east as part of a road from Axmouth to Lincoln. They also built an estate house (villa) at South Chard. Two Chards were mentioned just before the Norman Conquest. These were probably South Chard and Chard Old Town.

## CHARD MANOR

The earliest surviving reference to the Manor of Chard is from 1065 by Bishop Giso of Wells. Giso, a Frenchman from Lorraine, retained Chard Manor when William of Normandy conquered England in 1066. It was a large but not rich manor when surveyed for the Domesday Book. The name Cerdre (Chard) in the Domesday Survey of 1086 implies rough common land.

## CHARD TRANSPORT

The Chard Canal linking with Taunton opened in 1842 and was one of the most sophisticated canals ever built in Britain. In its short 13.5 miles (21.7 km) it had four inclined planes and two long tunnels. In its heyday it carried 25,000 tons of goods each year, the main cargo being coal. The canal lasted only 24 years and was replaced by branch railways of the L.S.W.R. and the Bristol and Exeter Railway (taken over by the G.W.R. by 1880). The former ran from Chard Junction on the Exeter to Salisbury line and the latter from Taunton. The line survived for 100 years before it closed.



## CHARD BOROUGH

170 years later its then owner, Bishop Jocelyn, founded a borough by a charter dated 15th January 1235. This charter offered, to those willing, 52 burgages of 1 acre (0.4 ha) each for a rent of 12 pence payable to the Bishop yearly. The borough boundaries remained the same for the next 600 years. Chard prospered and by 1300 was important enough to send two members to the King's Parliament, a costly privilege that was soon avoided. The original Chard Borough of 52 acres (21 ha) was enlarged in 1892 to include the Old Town. The 19th century was a time of great change; the large area of common land on the outskirts of the parish was enclosed into fields in 1819.

Since then the town has continued to grow, under the umbrella of South Somerset District, County and Chard Town Councils, with the South West of England Regional Development Agency having commissioned "the Chard Regeneration Framework".

# Past & Present



Developed in consultation with local residents, community groups and businesses, the Framework provides a long term plan to guide future development, neighbourhood enhancement and regeneration in Chard. The Framework is comprised of The Chard Vision - "Make it in Chard", Regeneration and Implementation Plans which propose a strategy to deliver: improvements to the whole town centre, benefiting from the transformation of the Boden Mill site into an attractive shopping, eating and business area; creation of new public civic spaces with better pedestrian links; formation of a more accessible "Green Heart" to make the most of open space around Holyrood Academy; and improvement to junctions and transport links into and around the town.

For more details please see the Chard Regeneration Framework website at:

[www.southsomerset.gov.uk/chardregen](http://www.southsomerset.gov.uk/chardregen)

## ST MARY'S PARISH CHURCH

is located on rising ground above Old Town. Some features date back to Norman times but the majority of the present building was started in 1400 and completed within fifty years.

The Church is open most days to visitors and access is either through the west door or the small priest's door on the south side of the building. The churchyard offers a quiet green oasis on the junction of a busy road and the provided seats are used by many people who pass through the grounds. The tower has a ring of eight bells and the ringers welcome visitors to their practice on a Tuesday evening at 7:30pm.

### Main Sunday services:

8am - Holy Communion

10am - Parish Service

Wednesdays: 9:45am Holy Communion

Please contact the Church Office, Mon-Fri mornings for up-to-date information.

Tel: 01460 67867.

Website [www.stmaryschard.co.uk](http://www.stmaryschard.co.uk)

Vicar: Revd Sue Tucker

## CHARD SCHOOL

in Fore Street is in a former dwelling house of 1583. John Symes, who was a member of a prominent Somerset family, gave it to the town in 1671 for use as a grammar school. The school is constructed of local stone from Snowdon Hill quarries.

## WATERLOO HOUSE AND MANOR COURT

also in Fore Street, is a merchant's house built in about 1550 and a Grade 2\* listed building. Some first floor rooms have fine plaster ceilings, and the great hall, an upper room, has remarkable wall and barrel vault ceiling plasterwork decorations.

It is probably from this historic building that Charles I issued his final Declaration for Peace in 1644.

## THE GUILDHALL

situated opposite Manor Court, contains the Town Hall and the former Corn Exchange market hall dating from 1834. The present handsome street frontage has a two-storey pillared portico surmounted by a cupola with clock. This once had an automatic gas illumination mechanism.

## HARVEY'S HOSPITAL AND ALMSHOUSES

in High Street resulted from a charitable bequest in 1663 by Richard Harvey to the poor of Chard. It was opened in 1698 and rebuilt in 1841 using the original materials.

## CHARD AND DISTRICT MUSEUM

in High Street occupies Godworthy House, once four small cottages, the former public house New Inn and ancillary buildings to the rear. The museum houses a considerable number of artefacts recording the history, culture and development of Chard and the surrounding area. The exhibitions relating to John Stringfellow's early powered flight and James Gillingham's pioneering artificial limbs are of national and international importance. Other features include a complete blacksmiths' forge, carpenters' and wheelwrights' workshops, plumbing, kitchen, laundry, childhood and costume displays. There is also an audio dramatisation of the Chard Lace Riot of 1842.

In 2006 this independent museum, a registered charity, was one of the first in the South West to be awarded accreditation by the Museum, Libraries & Archives Council, and is open weekdays and Saturday mornings from Easter to October.

Telephone: 01460 65091;

email: [info@chardmuseum.co.uk](mailto:info@chardmuseum.co.uk);

internet: [www.chardmuseum.co.uk](http://www.chardmuseum.co.uk).



## CHARD'S INDUSTRIAL DEVELOPMENT.

Outside the Borough, Chard Manor comprised lush valleys and fertile chalky hills. The early medieval economy was largely self-sufficient and arable based. By the 15<sup>th</sup> century much land had been converted to excellent sheep pastures. Wool production brought prosperity. Chard wool merchants turned to cloth-making and wealth flowed into the town. Weavers produced woollen narrow and broadcloths as a cottage industry financed by clothiers. The clothiers bought wool, handed it to spinners, then to weavers, supervised the cleaning and shearing processes and finally sold the finished cloth in the most profitable markets. The borough clothiers built substantial houses in the main streets. The appearance of the town centre still owes much to the wealth of those years. A great fire in 1577 destroyed much of the town and many of the warehouses, but by the end of the century Chard had recovered, many of its houses being called 'newly-built'.

# Features of Chard



By 1800 cloth-making in the area was declining. Weavers and their families faced hard times made worse by the wars with France.

In 1821 the Industrial Revolution came to Chard. The first machine lace factory opened and a new source of employment was available to ex-weavers who, as factory workers, lost much of their independence. The first lace mill was burnt down but was quickly rebuilt and more mills followed.

The abundant springs that first attracted early settlers to Chard were ideal as a source of water power. Later, demands for greater power and longer working time necessitated the change to steam engines. The gaunt brick buildings and chimneys have dominated Chard's skyline ever since.

Although lace-making has stopped in Chard, it is still made at nearby Perry Street in the south of the old parish.

See us on

# ChardTown.co.uk

## Shopping Eating Everything!



- somewhere to stay
- something to do
  - somewhere to eat
  - something to wear
  - somewhere to work
  - something to buy

For **ANYTHING** at all in Chard  
log onto [www.chardtown.co.uk](http://www.chardtown.co.uk)  
and **FIND IT!**

**With prices starting  
from only £4995,  
your perfect kitchen  
is just around the  
corner...literally**

**Explore the UK's Ultimate Kitchen Destination**

With a nationally renowned showroom and a family business heritage stretching back to 1940, Spillers are proud to offer visitors a unique blend of personal service, attention to detail, superb value for money and an unmissable line-up of exciting kitchens and appliances...right on your doorstep.



01450 67878

Chard Business Park, Chard, Somerset TA20 1FA

[WWW.COOKERCENTRE.COM](http://WWW.COOKERCENTRE.COM)





**JOHN STRINGFELLOW (1799-1883)** worked in Chard as a maker of bobbins and their carriages for the lace industry but also devoted time to the conquest of the air. William Henson drew up the plans for the first steam powered aeroplane, developed it and patented it in his name. He handed the project over to Stringfellow, who in 1848 designed a light rough engine and successfully completed the first powered flight. This amazing achievement took place in a disused lace factory in the town. A bronze model of that first plane stands in Fore Street and the museum has an exhibition of flight before the coming of the petrol engine. Stringfellow also invented and patented compact electric batteries used in early medical treatment. Stringfellow's house in the High Street and his grave in the cemetery are marked with plaques.

**JAMES GILLINGHAM (1839-1924)** was a high-class boot and shoemaker in the town who turned his skill to making artificial limbs. Much moved by the handicap borne by a Chardian, who lost the whole of his arm whilst firing a celebration cannon salute in 1863, Gillingham designed a replacement limb so efficient that it amazed the medical world. Making artificial arms and legs soon took over from shoemaking and Chard became the centre of this trade, unsurpassed internationally for three generations and particularly important during times of war.

# Famous People



**MARGARET GRACE BONDFIELD (1873-1953)** was the first woman to attain Cabinet rank in any British government. The daughter of a lace worker, she was born in Furnham on the edge of Chard and was educated at High Street School. She left home in her teens to work as a shop assistant at Brighton and had bitter experience of the hardships of that life in late Victorian days. She then turned to politics where her determination and organising skills drew her into the Labour Party. At the 1923 general election she won a seat in Northampton and was given the post of Parliamentary Secretary to the Minister of Labour. She later lost Northampton but was returned for Wallsend and in 1929 was invited to become Minister of Labour in the new Labour government. That government fell in the Great Depression of 1931 and thereafter her days were spent in trade union work and on foreign lecture tours.

[Chard History Group has supplied material for this brief outline of Chard's history. More detailed historical information can be found in the museum and in the many local publications available]

The Town Council represents the people of Chard and is one of the most active local councils in the south west. There are fifteen Town Councillors, three representing each of the town's wards. The Town Council acts over a wide spectrum of town life.

**Full Town Council:**

This oversees all aspects of budgetary control, expenditure, income and personnel issues for Chard Town Council.

**Amenities:**

Many of the town parks and gardens, as well as Chard Cemetery, are owned by the Town Council and maintained by the Amenities department which is also responsible for street cleaning.

**Finance & Guildhall:**

The Guildhall is one of Chard's most well known landmarks. Since 2009 it has also become the new home of Chard Town Council and this Town Council run, multifaceted building incorporates the Town Hall, Mayor's Parlour and the Tourist Information Centre.

**Planning & Highways:**

The Town Council consider all planning proposals and highways issues, working closely with South Somerset District Council to ensure that planning policy is implemented.

# Chard Town Council

## Chard Town Council Wards

**Avishayes Ward**

**Crimchard Ward**

**Holyrood Ward**

**Combe Ward**

**Jocelyn Ward**

See website for Councillors details

**Town Clerk: The Guildhall, Fore Street Chard TA20 1PP**

**Chard Town Council**

**Tel: 01460 239567 /Fax: 01460 65710**

**Office Hours: Monday to Friday 9am - 5pm and  
Saturday 9am - 1pm (Reception facilities only)**

**Chard Town Website: [www.chard.gov.uk](http://www.chard.gov.uk) Email: [chardtowncouncil@chard.gov.uk](mailto:chardtowncouncil@chard.gov.uk)**



Chard offers a wide variety of shops and services with the main shopping area encompassing Fore Street, Holyrood Street and High Street.



When entering Chard from any direction the main car parks are easy to find, and it is then just a short walk to the central shopping area where the level pavements and accessible retail outlets make the visit enjoyable for all ages. The pleasant and relaxed shopping experience is enhanced by the increasing choice of cafés and restaurants.

The town has four national supermarkets. Some retailers have been trading in Chard for many years, and independent retailers present a wide choice of goods including clothes, antiques, hardware, computing and software, books, gifts, angling and food and drink.

# Shopping



Along with the weekly Saturday Street market, Chard also hosts its own long established Antiques and Collectors Fair held every Thursday in the Guildhall. Monthly Food and Craft Fairs are also held in the Guildhall.

Chard has much to offer the visitor and the resident shopper, providing enjoyable and convenient shopping with something for all tastes.



## B W TAXIS

AIRPORTS • DOCKS • STATIONS  
COURIER WORK & CONTRACTS WELCOME  
6 & 8 SEATER • WHEELCHAIR ACCESSIBLE  
VEHICLES AVAILABLE

**01460 53400**

UNIT 26, ILTON BUSINESS PARK, ILTON TA19 9PS  
Tel: 01460 53400 email: [Control@bwtaxis.co.uk](mailto:Control@bwtaxis.co.uk)

## AMMONITE LODGE GUEST HOUSE

43 High Street, Chard, Somerset TA20 1QL

Tel: 01460 63839



300 year old Grade II listed building offering charm, comfort and delicious breakfasts close to the centre of Chard (opposite the museum).

7 well appointed bedrooms (5 en-suite, 2 private bathrooms), comfortable sitting room and pretty gardens. Parking to rear.

Email: [info@ammonitelodge.co.uk](mailto:info@ammonitelodge.co.uk)

Website: [www.ammonitelodgelodge.co.uk](http://www.ammonitelodgelodge.co.uk)



## WATERMEAD GUEST HOUSE

High Street, Chard 01460 62834

AA★★★ Highly Commended Award

[www.watermeadguesthouse.co.uk](http://www.watermeadguesthouse.co.uk)

## LINDENS

Snowden Cottage Lane, High Street,  
Chard, Somerset TA20 1QS  
email: [joan@lindenshouse.co.uk](mailto:joan@lindenshouse.co.uk)

Robin & Joan Arnold welcome you to Lindens B&B accommodation.

- All rooms en-suite with colour television, tea/coffee making facilities and hairdryer •
  - Choice of breakfast menu, including full English and fresh fruit •
  - Swimming pool, Sauna, large gardens, private parking •
- Lindens is an ideal location, whether for a short or long stay. Close to the town centre and within easy reach of the Jurassic Dorset Coast, Devon and Somerset Coast and both Exeter & Bristol Airports.

Tel/Fax: 01460 61137 Mobile: 07860 508546

## T.P.TIMBER PRODUCTS

Manufacturers and Suppliers  
of packing crates, pallets  
and tailor made sheds & fencing.  
Come and see our factory shop.

- RABBIT HUTCHES & RUNS •
- DOG KENNELS •
- CAT HOUSE • VARIOUS BIRD CAGES •
- NESTING BOXES • NUT FEEDERS •
- BIRD TABLES • CHICKEN HOUSES •

*Quality products all at*  
**FACTORY PRICES**

**1 East Street, Chard, Somerset**

**Tel/Fax: 01460 65655**

Between 9am - 5pm Monday - Friday,  
9am - 1pm Saturday

**PARKING AT REAR OF PREMISES**

## yarlington

Financial Advice

### Do you need advice on Money Matters or Welfare Benefits?

We are holding regular advice sessions for our residents at

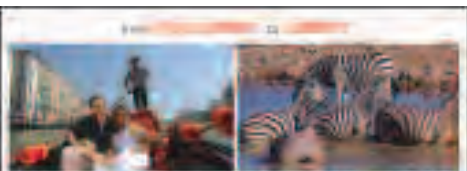
**The Guildhall, Chard**

**every Friday 9 a.m - 1 p.m.**

Come along and see us and we may be able to help you to get your finances in order.

For more information, or to book a private appointment, visit our website [www.yhg.co.uk/](http://www.yhg.co.uk/) HelpAnd Advice and follow the link to Financial Consultation, or call 01935 606665

Help may be  
closer than you  
think



Whenever you're going, there's one travel agent that can help find the right holiday, at the right price for you.

## BATH TRAVEL

Chard, 25 Fore Street (01460) 63741



# FORDE ABBEY & GARDENS

Enjoy England Excellence Awards Silver Winner 2008



## 850 years of history and tranquility

30 acres of award winning gardens, tearoom, gift shop, plant centre, pottery exhibition and children's garden trail  
Gardens open daily 10am-4.30pm

Free entry for children under 16 - Great value Season Tickets available  
01460 221290 - www.fordeabbey.co.uk - 4 miles SE of Chard

## The Lordleaze Hotel and Restaurant

- Family Owned and Run - in our 14th year
- Friendly, Efficient Service
- 25 En-suite Bedrooms
- Weddings
- Special Occasions
- Meetings

Dinner served 7 days a week, using quality local produce.  
Open to non-residents,  
Sunday lunches.



THE LORDLEAZE HOTEL

South Hill - Chard - Somerset - TA20 2JW



Tel: 01460 61066

E-mail: [info@lordleazehotel.com](mailto:info@lordleazehotel.com) Website: [lordleazehotel.com](http://lordleazehotel.com)

In 1790 it is said that there were six mills weaving broadcloth in Chard employing nearly all the inhabitants. With the decline of the cloth industry in the early 19<sup>th</sup> century, lace-making took over as the principal industry and this remained until the beginning of this century when a company take-over moved production, and with it many Chard inhabitants, to Nottingham. Charles Dening, a town ironmonger, became an agricultural machinery manufacturer in 1865. The business steadily grew and Dening & Co. became Dening of Chard in 1937, employing in excess of 1,000 people in its heyday. Beyer Peacock took the business over in 1951, and from this two of Chard's major companies, Brecknell Willis & Co. Ltd., producing overhead pantographs and electric

major ports can be reached quickly and efficiently. Chard's high quality working environment is therefore well balanced with good prospects for its economy in the future.

Chard's population is around 14,000 but the catchment is substantially larger when the travel to work area is taken into consideration. The population continues to grow; between 1981 and 1991 there was a rise of 11.7% and this is likely to continue as significant amounts of land have been allocated for further housing and business use.

The town itself is a traditional bustling market town but its employment is very much centred on manufacturing with about a third employed

# Business & Industry

wheelchairs and Space Decks Ltd., producing roof structures, were formed. They are still major contributors to the local economy.

Chard's economy today is widely diversified with a range of firms including several large employers; Oscar Mayer Ltd., making chilled and frozen ready-made meals, and Numatic International Ltd., manufacturing vacuum cleaners and cleaning equipment. Other major firms include Doncasters Chard Ltd., Colin Mear Engineering Ltd., Swisstulle (UK) Ltd., Action Aid, Phoenix Engineering and Edward Pearson Ltd., C & D South West Ltd., and Cleeve of London.

The success of these industries has a lot to do with Chard's location on the A358 giving it excellent access to both the M5 and the A303. This means that all parts of the country and

in this sector, which is in line with the district as a whole.

The formation of new businesses, their relocation and general assistance to existing businesses is supported by organisations such as Business Link together with the District Council. This support includes a variety of services, ranging from assistance in finding premises to advice on finance, marketing, distribution, exporting, technology, etc., which help give businesses that necessary competitive edge.

## **Business Contacts:**

Business Link 0845 600 9966

South Somerset District Council Economic Development Unit 01935 462462



# BRECKNELL WILLIS

P O BOX 10 · CHARD · SOMERSET · TA20 2DE DT460 64941

Operating in Chard since 1938

Specialising in the design, manufacture, installation and commissioning of conductor rail systems, trainborne current collectors and overhead systems

More information can be found on [www.brecknellwillis.com](http://www.brecknellwillis.com)

A MEMBER OF THE FANSTIAN ELECTRIC GROUP



WORLD LEADERS IN ELECTRIFIED RAIL TRANSPORT SYSTEMS

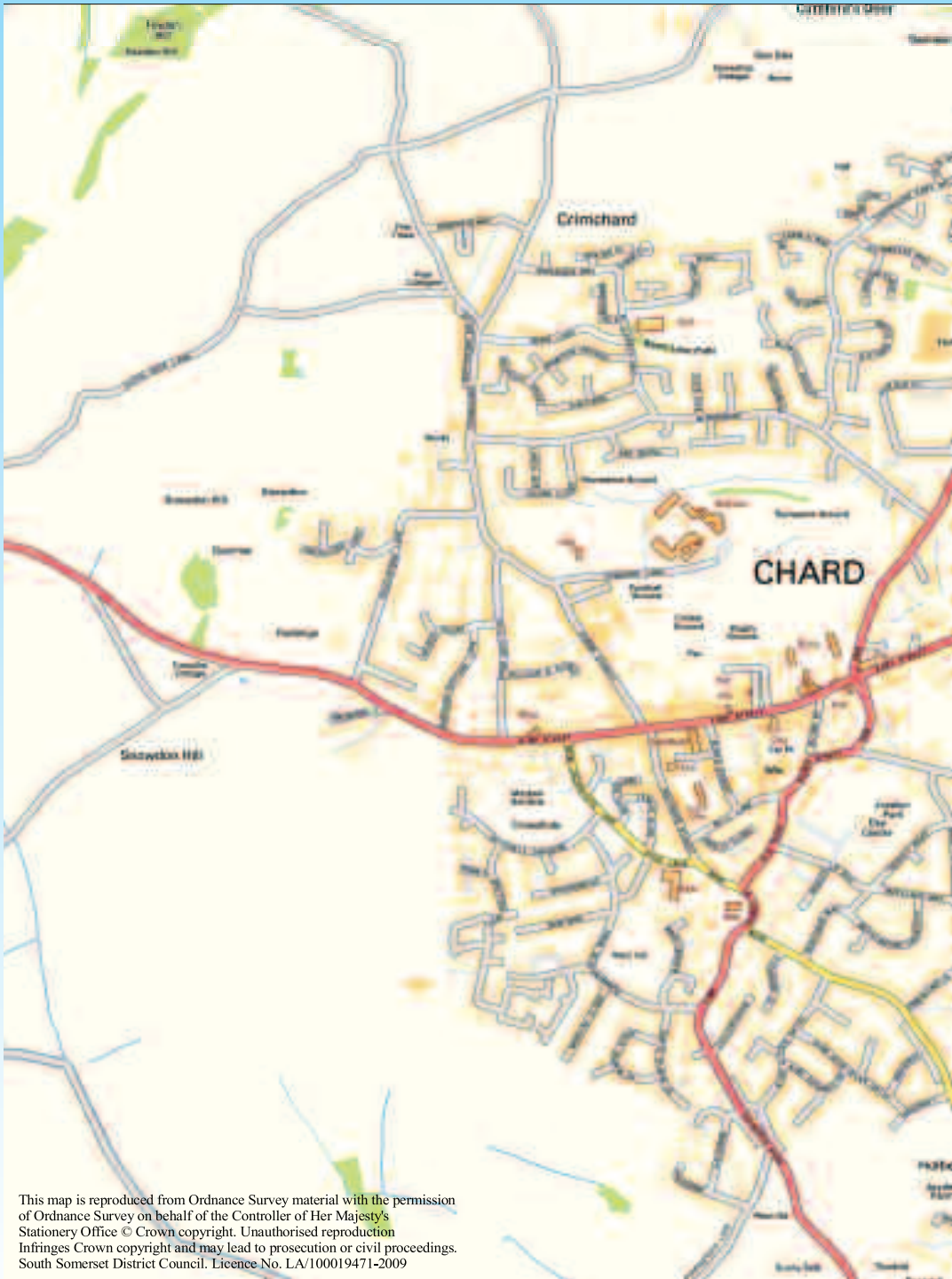


**Pecorama**  
in the village of Berr

**The family day out  
that everyone  
enjoys!**

- Model Railway Exhibition
- Steam Trains
- Beautiful Gardens
- Stunning Sea Views
- Children's Entertainment
- For more information see our free leaflet or visit the website.

PECORAMA 0202 34509 0122 984 Fax 01207 21502 [www.pecorama.org](http://www.pecorama.org)



This map is reproduced from Ordnance Survey material with the permission of Ordnance Survey on behalf of the Controller of Her Majesty's Stationery Office © Crown copyright. Unauthorised reproduction infringes Crown copyright and may lead to prosecution or civil proceedings. South Somerset District Council. Licence No. LA/100019471-2009



Educational opportunity is available from an early age in Chard with a number of playgroups and pre-school groups providing an enlightening and creative start to life. A comprehensive list of the schools and playgroups can be found in the directory at the back of this guide.

### **AVISHAYES PRIMARY SCHOOL**

Built in 1968 Avishayes Primary School & Early Years Centre has currently 250 children on roll and there is provision for 46 children from the age of 2 in their nursery.

### **MANOR COURT PRIMARY SCHOOL**

Founded in 1972 Manor Court is the largest primary school in the town. Academic

and occupies a series of interesting Grade 2\* listed buildings in the town's main street. Chard School caters for both boys and girls from the ages of 2 to 11 years and the School follows the National Curriculum for both Key Stages 1 and 2. Testing is undertaken at 7 and 11, with results far higher than the local or national averages.

### **HOLYROOD ACADEMY**

Holyrood Academy became a Comprehensive School in 1970. It expanded into its present two sites in 1980 and in September 1986 it achieved Community School status. In 2010 Holyrood School not only received an outstanding Ofsted report but the school

# Education

studies are based on a dedicated, locally based curriculum offering pupils rich 'hands-on' experiences.

### **REDSTART PRIMARY SCHOOL**

Redstart Primary School was opened in 1990 and caters for 317 children. The school naturally strives for academic excellence but also looks beyond the National Curriculum to develop children socially and creatively. There are many lunchtime and after-school clubs and outside trips are regular features.

### **CHARD SCHOOL**

Chard School was founded on its present site by the Burgesses of Chard in May 1671

also achieved Academy status. The school is, therefore, not only a co-educational day school for students aged 11-18, but is also a source of educational and recreational facilities for all age groups in the Chard community throughout the year.

The campus is host to CRESTA (the Chard Recreational, Educational & Sports Trust Association), It operates an indoor heated swimming pool, a fitness room, a four-court badminton sports hall, two squash courts, three tennis courts and a floodlit all-weather surface. Gymnasiums, hall, courts and rooms are also available for use by members of the community during evenings, weekends and school holidays.



Chard Guildhall started life as an arrangement of municipal buildings and market in the late 18<sup>th</sup> Century. This included an assize and a range of shambles.

In 1831 the municipal corporation passed a resolution to remove and rebuild the shambles and in 1833 it was resolved that the Guildhall should be taken down. The following year it was decided to adopt the plans produced by Mr Carver for the new Guildhall and Corn Market. This scheme was later altered and the site where the building currently exists was selected. The building opened in 1837 although various improvements were made during the 19<sup>th</sup> century.

Further refurbishment was carried out in the 1960s but ultimately the Town Council took the decision to completely refurbish and modernise the Grade 2\* listed building and a bid was made to the Heritage Lottery Fund in June 1998 in order to be in a position to commence works.

# Chard Guildhall



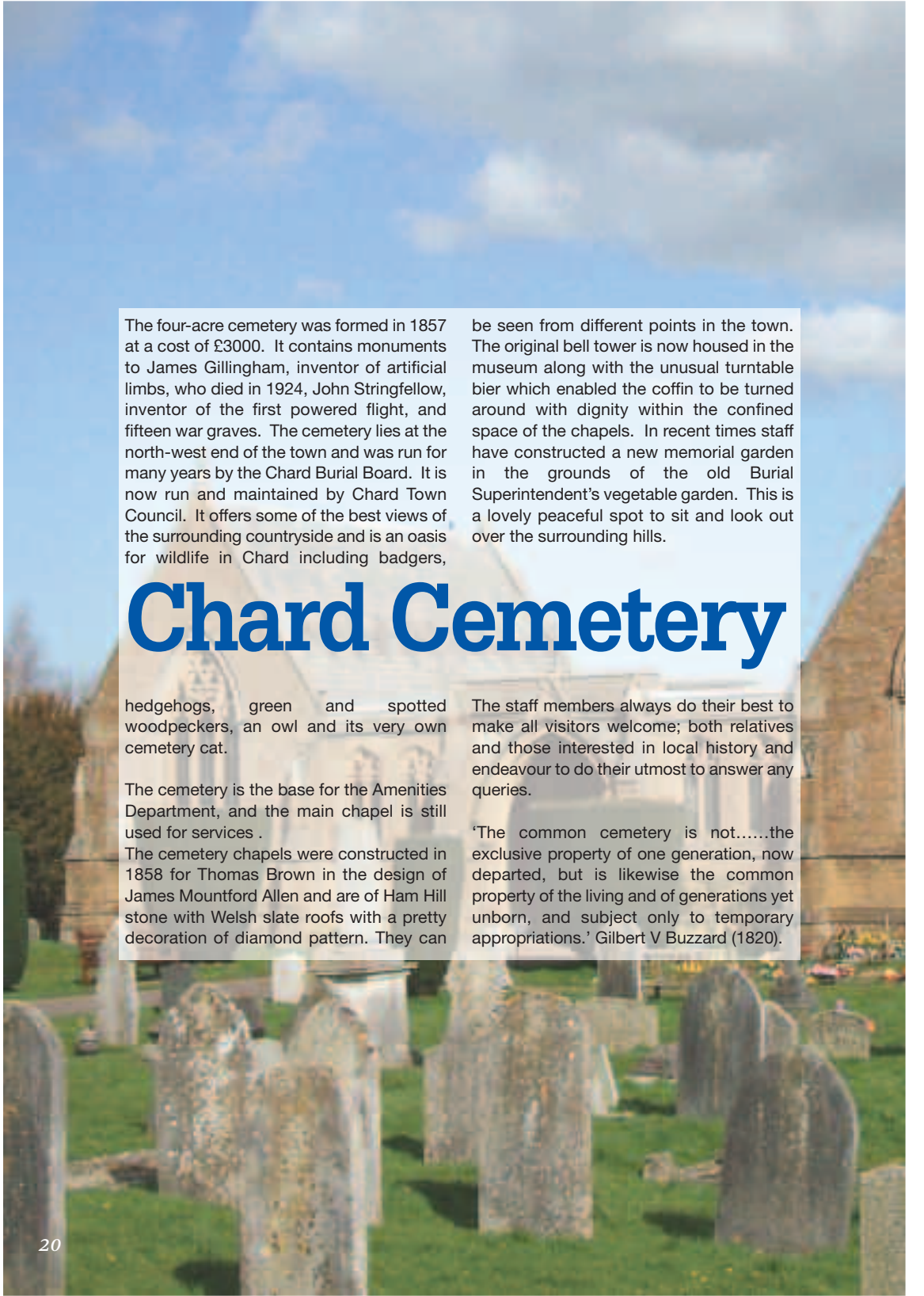
For bookings &/or further information please phone: **01460 239567**, or email **Guildhallenquires@chard.gov.uk**  
Further information is also available on Chard Town Council's website **[www.Chard.gov.uk](http://www.Chard.gov.uk)** following the Guildhall link.

The intention of the redevelopment project was to ensure that the building had a long-term sustainability as a community resource as well as to manage this historic asset in the most appropriate manner. The building was completed and re-opened in September 2003.

The Guildhall complex is used primarily as a community building for a wide range of activities, and in 2009 it became the permanent base for the offices of Chard Town Council. It is an important civic building and houses the Mayor's Parlour and Council offices.

Facilities include the main auditorium with its own balcony (with tiered seating) accommodating over 200 people. The Town Hall on the second floor is ideal for meetings and conferences and has an external balcony overlooking the main street. A pantry adjoins the Town Hall from which light refreshments can be prepared. The building also houses the Tourist Information Centre.

Since re-opening, the venue has been busy with lettings and Chard Town Council plans to expand its programme of Council promoted events within the Guildhall.



The four-acre cemetery was formed in 1857 at a cost of £3000. It contains monuments to James Gillingham, inventor of artificial limbs, who died in 1924, John Stringfellow, inventor of the first powered flight, and fifteen war graves. The cemetery lies at the north-west end of the town and was run for many years by the Chard Burial Board. It is now run and maintained by Chard Town Council. It offers some of the best views of the surrounding countryside and is an oasis for wildlife in Chard including badgers,

be seen from different points in the town. The original bell tower is now housed in the museum along with the unusual turntable bier which enabled the coffin to be turned around with dignity within the confined space of the chapels. In recent times staff have constructed a new memorial garden in the grounds of the old Burial Superintendent's vegetable garden. This is a lovely peaceful spot to sit and look out over the surrounding hills.

# Chard Cemetery

hedgehogs, green and spotted woodpeckers, an owl and its very own cemetery cat.

The cemetery is the base for the Amenities Department, and the main chapel is still used for services .

The cemetery chapels were constructed in 1858 for Thomas Brown in the design of James Mountford Allen and are of Ham Hill stone with Welsh slate roofs with a pretty decoration of diamond pattern. They can

The staff members always do their best to make all visitors welcome; both relatives and those interested in local history and endeavour to do their utmost to answer any queries.

'The common cemetery is not.....the exclusive property of one generation, now departed, but is likewise the common property of the living and of generations yet unborn, and subject only to temporary appropriations.' Gilbert V Buzzard (1820).



The Chard sculptures, created by sculptor Neville Gabie, were commissioned as part of the landscaping improvements carried out in Fore Street and High Street during 1991. Their design and development involved a partnership between Chard Town Council, Cerdic Foundries, South Somerset District Council, South West Arts and Holyrood School. The result was a group of three sculptures located as part of a water feature at the High Street/Holyrood Street corner. The water feature comprises three 'boulders' which represent three different aspects of the town.



The first, situated at the upstream end, is cast from an actual water-worn boulder and is intended to show that materials change over a period of time both in appearance and the uses to which they were put.

# Chard Sculptures



The second spherical one is made up of casts of the hands of many Chard residents, mixed with mechanical forms and shapes and reflects the idea that Chard's industrial heritage has grown and developed through hand-made processes, craftsmanship and imagination.

The third geometrical shape reflects the fact that Chard is now the home of many enterprises of a highly industrial nature.

The three are complemented by a fourth sculpture situated on the raised seating area at the upper end of Fore Street. This is a representation of the steam powered aircraft constructed and flown by Chard pioneer John Stringfellow.



Chard has embraced the idea of closer links with our partners in Europe and has long-standing twinning arrangements with Helmstedt in Germany, Morangis in France and Comuna Seica Mare in Romania.

## HELMSTEDT

Chard has been officially twinned with Helmstedt since 1980 although contacts between the two towns go back several years before that. The Chard-Helmstedt Society is the focal point for these contacts.

Helmstedt is a town of nearly 30,000 inhabitants near Brunswick, in the state of Lower Saxony in north central Germany. It

Morangis is a prosperous town with a population of some 10,000 people. The town lies just south of Orly Airport and receives much of its municipal income from factories and businesses which have chosen to locate themselves in a town with good transport links.

Morangis has excellent sporting and cultural facilities and the Municipal Council has turned the local château into a magnificent arts centre. The town is within 15 kilometers of Paris. Euro Disney is a similar distance to the east and to the south are the forests of Fontainebleau.

# Twin Towns

lies in attractive wooded countryside north of the Harz Mountains. It was previously the main road and rail crossing-point between West and East Germany. Berlin is within easy reach. As well as cultural, school and sporting contacts, regular exchange visits take place and new members are always welcome to join the Society.

## MORANGIS

Chard's French twin town is Morangis in the department of Essone, not too far from Paris. The first links were made in 1983. The decision to twin formally was made in 1993 and carried through in impressive ceremonies in both towns in April and May of 1994.

## COMUNA SEICA MARE

The Comuna is in Sibiu County, Transylvania, and has a population of 3,500. The main religion is Orthodox and the languages spoken are Romanian and Hungarian. Comuna comprises seven villages within a radius of 10 miles. Transport consists of trains to Sibiu and Medias but between villages it is mainly horse and cart. There are five primary schools and a senior school for 11 to 14 year-olds. Approximately ten small shops sell foodstuffs and clothes and there are several flour mills and bakers. Villagers farm strips of land and graze their cows and goats locally. There is traditional craftwork but little industry. Many people travel to towns for work.



# CHARD TOURIST INFORMATION CENTRE

The Guildhall, Fore Street, Chard, Somerset TA20 1PP

Tel: (01460) 260051 email: [Chard.tic@chard.gov.uk](mailto:Chard.tic@chard.gov.uk)

[www.chard.gov.uk](http://www.chard.gov.uk)



- For information on what to do
- Where to stay
- Where to go & what to see
- Accommodation Booking Service
- Agents for Tourist Attractions & Events
- Maps, Books & Souvenirs
- Tickets for local & London coaches

## Tourist attractions within easy reach of Chard

Information on all these attractions is available at Chard Tourist Information Centre

(Please note that some are not open all year)

Axe Valley Bird & Animal Park, Kilmington Axminster, Devon EX13 7RA Tel: 01297 34472  
Barrington Court Gardens, Barrington, Ilminster, Somerset TA19 0NQ Tel: 01460 242614  
Beer Quarry Caves, Beer, Devon EX12 3AT Tel: 01297 680282  
Broadwindsor Craft & Design Centre, Broadwindsor, Dorset DT8 3PX Tel: 01308 867328  
Chard & District Museum, Godworthy House, High Street, Chard, Somerset TA20 1QB Tel: 01460 65091  
Chard Reservoir Local Nature Reserve, Oakland's Road, Chard, Somerset  
Devon's Crealy, Sidmouth Road, Clyst St Mary, Exeter, Devon EX5 1DR Tel: 01395 233200  
Escot Gardens, Maze & Park, Ottery St Mary, Devon. EX11 1LU Tel: 01404 822188  
Ferne Animal Sanctuary, Chard, Somerset. TA20 3DH Tel: 01460 65214  
Fleet Air Arm Museum, RNAS Yeovilton, Somerset BA22 8HT Tel: 01935 840565  
Forde Abbey & Gardens, Chard, Somerset TA20 4LU Tel: 01460 221290  
Ham Hill Country Park, Stoke-Sub-Hamdon, TA14 6RW Tel: 01935 823617 (Ranger's Office)  
"Lakes & Gardens" Cricket St Thomas Hotel, Chard, Somerset TA20 4DD Tel: 01460 30892  
Lyme Bay Winery, Shute, Axminster, Devon EX13 7PW Tel: 01297 551355  
Lytes Cary Manor, Nr Chalton Mackrell, Somerton, Somerset TA11 7HU Tel: 01458 224471  
Montacute House, Montacute, Somerset TA15 6XP Tel: 01935 823289  
Pecorama / Pecorama Gardens, Beer, Seaton, Devon EX12 3NA Tel: 01297 21542  
Perry's Cider, The Cider Mills, Dowlish Wake, Ilminster, Somerset TA19 0NY Tel: 01460 55195  
Seaton Tramway, Harbour Road, Seaton, Devon EX12 2NQ Tel: 01297 20375  
The Donkey Sanctuary, Sidmouth, Devon EX10 0NU  
Tintinhull Garden, Farm Street, Tintinhull, Yeovil, Somerset BA22 8PZ Tel: 01935 823289  
West Somerset Railway, The Railway Station, Minehead, Somerset TA24 5BG Tel: 01643 704996

## CINEMAS

Cineworld Complex, Yeovil  
0871 220 8000

Odeon, Taunton 0871 224 4007

## THEATRES & ART CENTRE

Arts Centre, Meeting House, Ilminster  
01460 55783

Brewhouse Theatre & Arts Centre, Taunton  
01823 283244

Bridport Art Centre, Bridport 01308 42404

Octagon Theatre, Yeovil 01935 422884

The Warehouse Theatre, Ilminster  
01460 57049

## CARNIVALS

Bridgewater, November

Chard Childrens', October

Chard, October

Crewkerne, October

Glastonbury, November

Ilminster Childrens', September

Ilminster, October

North Petherton, November

Shepton Mallet, November

South Petherton, September

Taunton, October

Wellington, September

Weston-Super-Mare, November

# Entertainment

## LOCAL MARKET DAYS & FARMERS MARKETS

Axminster: Thursday

Bridport: Wednesday & Saturday

Chard: Saturday

Crewkerne: every 3<sup>rd</sup> Saturday

Honiton: Tuesday & Saturday

Ilminster: Thursday

Yeovil: Tuesday & Friday

## OTHER EVENTS

Chard Antiques & Collectors Fair in the  
Guildhall, Chard, every Thursday,  
8.00am-2.00pm.

Screen at the Guildhall, Chard; third  
Tuesday in the month, September to  
June, 7.30pm.



Chard Reservoir Nature Reserve is situated on the north east fringe of the town. It was formed from a reservoir that was built in 1842 to provide water for the former Chard Canal. The beautiful stretch of water was acquired by South Somerset District Council in 1990 and designated a nature reserve. Some original features can be seen from the circular walk together with excellent views across open water. This beautiful stretch of open water stands amidst attractive woodlands is an important wildlife habitat and is within walking distance of the town centre.

There is a car park nearby in Oaklands Avenue and there is an access route suitable for the less able and wheelchair users.

# Chard Reservoir



The Reservoir provides an exciting opportunity to observe local wildlife. Over 150 species of bird have been recorded. It is well known as a nesting site for the Great Crested Grebe. The reed beds are home to various species of warbler and provide sheltered nesting sites for Mallard, Moorhen and Coot. A marked walk of about 2 miles takes in the western edge of the reservoir. However a small section may be closed from 1<sup>st</sup> March to 1<sup>st</sup> July to prevent nesting birds from being disturbed.

## Fishing at Chard Reservoir

Fishing rights are owned by South Somerset District Council and controlled in conjunction with Chard and District Angling Club.

Day permits available on the bank.

Memberships available from Barrons Tel: 01460 63593

Chard is surrounded by stunning countryside offering many local walks and cycling routes.

6 Circular Walks in and around Chard on the fringe of the Blackdown Hills is a new leaflet recently produced in conjunction with both the Blackdown Hills Partnership and South Somerset District Council. More walking leaflets on the Blackdown Hills available.

As part of the National Cycle Network, Sustrans (Route 33) follows the South Somerset long

emplacements built by the British army in 1940 to contain a feared Nazi German invasion of the South West (see also The Stop Line Way leaflet).

**Seating is available along the way to sit and enjoy the views.**

Of further interest is the town's Historic Blue Plaque Trail which identifies notable buildings and sites in Chard. For more information please visit the Tourist Information Centre.

# Walking & Cycling

distance coast-coast walking and cycling route from Chard and enables cyclists and walkers to travel approximately 5 miles off road starting from Stringfellow Park, Chard. This attractive cycle route, which is also suitable in parts for both wheelchairs and pushchairs, is mostly traffic free and follows the old Great Western Railway line past the village of Donyatt and Herne Hill to Ilminster Town Centre. One can see artefacts from the 2<sup>nd</sup> World War such as pillboxes, machine and anti-tank gun

## HORSE RIDING

Curland Equestrian Centre & Stud Farm (Curland) 01460 234234

Drakes Farm Riding Centre (Ilminster) 01460 53918

Hillview Riding Centre (Crewkerne) 01460 72731

For further information and advice please visit Chard Tourist Information Centre or our website [www.Chard.gov.uk](http://www.Chard.gov.uk).

# Where to Stay in and around Chard offering - Quality Assured Accommodation

## HOTELS

Hornsbury Mill, Eighwater, Chard TA20 3AQ  
Tel: 01460 63317 [www.hornsburymill.co.uk](http://www.hornsburymill.co.uk)  
Email: [hornsburymill@btclick.com](mailto:hornsburymill@btclick.com)

The Bellplot Hotel, High Street, Chard TA20 1QB  
Tel: 01460 62600 [www.bellplothouse.co.uk](http://www.bellplothouse.co.uk)  
Email: [info@bellplothouse.co.uk](mailto:info@bellplothouse.co.uk)

The Lordleaze Hotel, Henderson Drive, Forton  
Road, Chard TA20 2HW  
Tel: 01460 61066 [www.lordleazehotel.co.uk](http://www.lordleazehotel.co.uk)  
Email: [info@lordleazehotel.co.uk](mailto:info@lordleazehotel.co.uk)

## BED & BREAKFAST

Ammonite Lodge Guest House, 43 High Street  
Chard TA20 1QL  
Tel: 01460 63839 [www.ammonitelodge.co.uk](http://www.ammonitelodge.co.uk)  
Email: [info@ammonitelodge.co.uk](mailto:info@ammonitelodge.co.uk)

Fulwood House, Ebben Lane, Winsham Chard  
TA20 4EE  
Tel: 01460 30163 [www.fulwoodhouse.co.uk](http://www.fulwoodhouse.co.uk)  
Email: [liz.earl@virgin.net](mailto:liz.earl@virgin.net)

Graden, Peasmarsh, Ilminster TA19 0SG  
Tel: 01460 52371

Home Farm, Hornsbury Hill, Chard TA20 3DB  
Tel: 01460 63731

Purtington Barn Purtington, Chard TA20 4DH  
Tel: 01460 432078 [www.purtingtonbarn.com](http://www.purtingtonbarn.com)  
Email: [elizann@btinternet.com](mailto:elizann@btinternet.com)

The Haymaker Inn, Wadeford, Chard TA20 3AP  
Tel: 01460 64161

Wambrook Farm, Wambrook Chard TA20 3DF  
Tel: 01460 62371 [www.wambrookfarm.co.uk](http://www.wambrookfarm.co.uk)  
email: [wambrookfarm@aol.com](mailto:wambrookfarm@aol.com)

Watermead Guest House, 83 High Street, Chard  
TA20 1QT Tel: 01460 62834  
[www.watermeadguesthouse.co.uk](http://www.watermeadguesthouse.co.uk)  
Email: [enquires@watermeadguesthouse.co.uk](mailto:enquires@watermeadguesthouse.co.uk)

## SELF CATERING

Angles Farm, Hawkchurch, Axminster Devon  
Ex13 5UA  
Tel: 01297 678295 [www.cottageguide.co.uk](http://www.cottageguide.co.uk)

Apple Tree Lodge, Castle Cross, Blackwater,  
Buckland St Mary, Chard TA20 3LD  
Tel: 01460 234271  
[www.castlecrossholidays.co.uk](http://www.castlecrossholidays.co.uk)  
Email: [enquires@castlecrossholidays.co.uk](mailto:enquires@castlecrossholidays.co.uk)

Morpeth, Vicarage Hill, Combe St Nicholas,  
Chard TA20 3LR  
Tel: 01460 62138 Email: [theleibrick@aol.com](mailto:theleibrick@aol.com)

Myrtle Cottage, Church Lane, Horton, Ilminster  
TA19 9RN  
Tel: 01223 871294 [www.myrtleonline.co.uk](http://www.myrtleonline.co.uk)

Tamarack Lodge, Fyfett Farm, Otherford, Chard  
TA20 3QR  
Tel: 01823 601270 [www.tamaracklodge.co.uk](http://www.tamaracklodge.co.uk)  
Email: [matthew.sparks@tamaracklodge.co.uk](mailto:matthew.sparks@tamaracklodge.co.uk)

## TOURING PARKS & CAMPSITES

Alpine Grove Touring Park, Forton, Nr Chard  
TA20 4HD Tel: 01460 63479 [www.alpinegrove-touringpark.com](http://www.alpinegrove-touringpark.com)  
Email: [stay@alpinegrovetouringpark.co.uk](mailto:stay@alpinegrovetouringpark.co.uk)

Five Acres Caravan Club Site, Giant Grave Road,  
Beetham, Nr Chard TA20 3QA  
Tel: 01460 234519 [www.caravanclub.co.uk](http://www.caravanclub.co.uk)

The accommodation information in this listing  
has been taken from [www.visitbritain.co.uk](http://www.visitbritain.co.uk) and  
was correct at the time of going to print.

We would like to acknowledge the help which has been received from the volunteers at Chard Tourist Information Centre in producing this guide.

Photographs produced by  
Holyrood Academy  
year 12 students:  
Becky Brown, Saffron Lewis,  
Jessica Hayter, Deanne Cox,  
Kristina Ryan, James Stillman,  
Ross Churchill and Ricardo Rocha.

The Chard Guide is published by  
Chard Town Council.

Designed & produced by  
Meridian Print & Marketing Ltd. 01395 568380



## Holyrood Academy Art Department Community Links

Holyrood Academy in partnership with Chard Town Council presents a continuous exhibition of students' vibrant work from the Art and Photography department. The support of the Council has enabled the students, aged 17-18, to exhibit a variety of Art and Photography pieces linking with projects on diversity of culture, the natural world, music, local area, and history. Taking the display out of the Academy environment and placing it in the centre of the town allows for whole community enjoyment.

The students have also had the opportunity to work with Local artists as part of the Chard Regeneration project. Becky Buchanan came to work with students in the Holyrood Academy Art Department to create art inspired by their local area. These are now displayed in the Guildhall.

The Sixth Form Photography students have been working on a project as a response to their local area. As a result of their hard work and raw talent they have been invited to be included in the Town Guide.

'I am so pleased that the Council have embraced the flair of Holyrood Art and Photography students', and have encouraged young people in Chard to take ownership of their town through this Exhibition in the Guildhall.'

*Miss Rebecca Cade teacher of Art and Photography at Holyrood Academy.*



# DIRECTORY OF SOCIAL AMENITIES

## CHURCHES

Chard Baptist Church: Minster-Rev Warwick Lydiate  
9 Holyrood Street, Chard TA20 2AH  
Tel: 01460 65904  
Email: [admin@chardbaptist.org.uk](mailto:admin@chardbaptist.org.uk)  
Website: [www.chardbaptist.org.uk](http://www.chardbaptist.org.uk)  
Sunday Service: 10.30am and 6.30pm.  
Other activities include a wide range of home groups that meet at different times throughout the week.

St Mary's Church: Vicar - Sue Tucker  
Duck Lane, Chard TA20 2HJ  
Tel: 01460 261897 Church Office: 01460 67867  
Web Site: [www.stmaryschard.co.uk](http://www.stmaryschard.co.uk)  
Mon-Fri 9am-12noon  
Sunday Services: 8:00am and 10:00am.  
9.45am on Wednesdays.  
St Mary's is a Grade 1 listed building and dates from the 15th century. The church is open during the day to visitors through the small 'priest door' on the south side of the church.

Independent Evangelical  
Forefront Community Church, Forefront  
Community Centre, 42 Fore Street, Chard TA20 1QA  
Tel: 01460 66080 Receptionist: Angie Thurbon  
Website: [www.forefront.org.uk](http://www.forefront.org.uk)  
Sunday service & activities for all ages: 10:30am  
Chard Guildhall Community based activities include "Coffee & Co" & "Lord's Larder" - emergency food supplies.

Church of the Good Shepherd:  
Father Roger Pittard  
Furnham Road, Chard TA20 1AE  
Tel: 01460 61012

Chard Methodist Church:  
Minster Rev Marilyn Tricker, Fore Street,  
Chard TA20 1PT  
Tel: 01460 63289  
Email: [marilyn@mtricker.plus.com](mailto:marilyn@mtricker.plus.com)  
Family Worker: Mrs Gillian Francis  
Tel: 07807 800859  
Other Activities: listed in this guide.

Roman Catholic: Church of the English Martyrs  
Parish Priest: Rev Canon James O'Brien  
The Presbytery, 12 East Street, Chard TA20 1EP  
Tel: 01460 62197  
Email [parish@chardmartyrs.freeseerve.co.uk](mailto:parish@chardmartyrs.freeseerve.co.uk)  
Website [www.english-martyrs-chard.co.uk](http://www.english-martyrs-chard.co.uk)

The Monks Yard Church: Evangelical  
Church Leaders: Andrew & Marilyn Osborne  
The Monks Yard, Horton Cross Farm  
Horton Cross, Ilminster TA19 9RJ  
Tel: 01460 20002  
Email: [mychurch@hotmail.co.uk](mailto:mychurch@hotmail.co.uk)  
Web: [www.mychurchuk.com](http://www.mychurchuk.com)  
Sunday Services: 10:30am @ The Monks Yard

## PARENT, TODDLER & PRE SCHOOL GROUPS

Action for Children "Chard Children's Centre"  
1st Floor, Clare House, Millfield Chard TA20 2DA  
Tel: 01460 65762  
Free fun play sessions for 0-5 years

Chard Baptist Church Parent & Toddler Group  
Heather Thomas, Holyrood Street Chard TA20 2AH  
Tel: 01460 67122

Chard Methodist Parent & Toddler Group  
c/o Mrs Margaret Tustain, Chard Methodist  
Church, Fore Street, Chard TA20 1PT  
Tel: 01460 67855

Chard Methodist Playgroup  
Mrs Christine Parsons, Chard Methodist Church  
Fore Street, Chard TA29 1PT  
Tel: 01460 67855

Holyrood Playgroup  
Mrs Tessa Spiller, Zembard Lane, Chard TA20 1JL  
Tel: 07980032187

Manor Court Community Pre-School  
Summerfields Road, Chard TA202DY  
01460 67067

## SCHOOLS

Avishayes Primary School & Early Years Centre  
Mrs N Gordon - Head Teacher  
Fairway Rise, Chard TA20 1NS  
Tel: 01460 63050  
[office@avishayes.somerset.sch.uk](mailto:office@avishayes.somerset.sch.uk)

Chard School & Educational Nursery  
Mr J Stotesbury - Head teacher  
Fore Street, Chard TA20 1QA  
Tel: 01460 63234

Manor Court Community - Primary School  
Ms Sarah Wellman - Head teacher  
Duck Lane, Chard TA20 2ES  
Tel: 01460 62350

The Redstart - Primary School  
Mrs Suzanne Flack - Head teacher  
Redstart Road, Chard TA20 1DS  
Tel: 01460 67457

Holyrood Academy  
Mr M Hicks - Head teacher  
Zembard Lane , Chard TA20 1JL  
Tel: 01460 260100

## HEALTH

### Dental Surgeons

ADP Chard Dental Practice  
Unit 21 Chard Business Park, Leach Road  
Chard TA20 1FA  
Tel: 01460 67022

Springside Dental Practice  
33a Fore Street, Chard TA20 1PT  
Tel: 01460 61671

Whitecross Dental Centre  
32 Fore Street, Chard TA20 1PT  
Tel: 01460 62888

### Doctors Surgeries

Essex House Medical Centre,  
59 Fore Street, Chard TA20 1QA  
Appointments: 01460 65046  
Enquires: 01460 63071  
Emergencies: 01460 63101

Springmead Surgery  
Summerfield Road, Chard TA20 2EW  
Appointments: 01460 64457  
Emergencies: 01460 63380

Tawstock Medical Centre  
7 High Street, Chard TA20 1QF  
Appointments: 01460 67763

### Opticians

Boot D&A  
18 Fore Street, Chard TA20 1PP  
Tel: 01460 63097

Robert Firth Optometrists  
36 Fore Street, Chard TA20 1PT  
Tel: 01460 67771

Steven Beswetherick Opticians  
60 Holyrood Street, Chard TA20 2AH  
Tel: 01460 63535

## Hospitals

Chard & District Hospital  
Minor Injuries Department 9am - 9pm  
7 days a week  
Crewkerne Road, Chard TA20 1NF  
Tel: 01460 238220

Musgrove Park Hospital  
Accident & Emergency Department 24hr  
Taunton TA1 5DA  
Tel: 01823 333444

Yeovil District Hospital  
Accident & Emergency Department 24hr  
Higher Kingston, Yeovil BA21 4AT  
Tel: 01935 384355

## LOCAL GOVERNMENT

Chard Town Council  
The Guildhall, Fore Street, Chard TA20 1PP  
Tel: 01460 239567  
ChardTownCouncil@chard.gov.uk  
www.chard.gov.uk

Somerset County Council  
County Hall, Taunton TA1 4DY  
Tel: 0845 345 9166  
somersestdirect@somerset.gov.uk

South Somerset District Council  
Area West Offices, Holyrood Lace Mill  
Chard TA20 2YA  
Tel: 01460 260390

## LOCAL SERVICES

Action for Children "Toy Library"  
Avishayes Community Primary School  
Fairway Rise, Chard TA20 1NS  
Tel: 01460 65762

Avon & Somerset Constabulary  
Chard Police Station, Millfield, Chard TA20 2DA  
Tel: 0845 456 7000

Chard Tourist Information Centre  
The Guildhall, Fore Street, Chard TA20 1PP  
Tel: 01460 260051

Chard Recycling Centre  
Beeching Close, Chard TA20 1BB  
Tel: 01460 65998

Chard Library  
Holyrood Lace Mill, Holyrood Street  
Chard TA20 2YA  
Tel: 01460 63321  
Opening times: Monday, Tuesday, Friday 9am-5pm  
Wednesday CLOSED  
Thursday 9am-6pm, Saturday 9.30am-1pm

Chard Registration Office (Part-time)  
Holyrood Lace Mill, Holyrood Street  
Chard TA20 2YA  
Tel: 01460 239327

South Somerset Citizens Advice Bureau  
The Guildhall, Fore Street, Chard TA20 1PP  
Every Wednesday from 10am - 1pm

Yarlington Housing Group  
Lupin Way, Yeovil BA22 8WN  
Tel: 01935 404500  
E-mail: corporate@yhg.co.uk

## DIRECTORY OF ORGANISATIONS, CLUBS & SOCIETIES

### CHARITABLE & SELF HELP

Chard Intentional Peer Support Group  
c/o Forefront Community Centre, 42 Fore Street  
Chard TA20 1QA  
Tel: 07506 238540  
Chardpeergroup@yahoo.co.uk

Crowshute House Association  
c/o 33 St Mary's Close, Chard TA20 2EP  
Tel: 01460 62176

Samaritans  
Taunton & Somerset  
Tel: 01823 288 998  
Yeovil, Sherborne & District  
Tel: 01935 476 455

Tatworth & Forton Residents Action Group  
Contact: Nick Bernard  
Tel: 01460 220339

The Crowshute Centre  
c/o Mr D R Hill  
33 St Mary's Close, Chard TA20 2EP  
Tel: 01460 62176

The Good Companions  
Mrs Nancy Jones, 6 Millfield, Chard TA20 2DA  
Tel: 01460 68193

### CARNIVAL CLUBS

Domino Carnival Club  
Mrs S A Ball, Gloster, Furnham Crescent  
Chard TA20 1AZ  
Tel: 01460 63181

Chard Carnival Committee Ltd  
Helena Stone- Chairman, 9 Bondfield Way  
Chard TA20 1LE  
Tel: 01460 61224  
helenastone@hotmail.com  
<http://chardcarnival.wordpress.com/>

### CLUBS/GROUPS- GENERAL

Chard Camera Club  
Mr J Foulkes - Chairman, Ashfield  
Smallridge, Axminster, Devon TA20 1AU  
Tel: 01297 35687  
Terryrmar4@hotmail.com  
Meetings 1st & 3rd Thursday of the month at the  
Baptist Church, Holyrood Street, Chard

Chard Conservative Club  
6 High Street, Chard TA20 1QB  
Tel: 01460 63145 - Secretary  
Conclubchard@hotmail.co.uk

Chard - Helmstedt Society  
Mrs Collette Boyle - Secretary  
Trivetts, Combe St Nicholas, Chard TA20 3NG  
Tel: 01460 62449  
collette@boyleonline.me.uk

Chard History Group  
Ann Courtney - Secretary  
"U" Macha", 50 Bampton Avenue  
Chard TA20 1DS  
Tel: 01460 61407  
Anncourtney17@hotmail.com

Chard, Ilminster & Crewkerne Pensioner's Forum  
Campaigning on issues that affect pensioners  
in south Somerset. Membership is free.  
Contact John Robson Tel: 01460 53354

Chard 2000 Incorporating Chard in Bloom.  
Ms S Pittwood - Secretary  
50 Halcombe, Chard TA20 2DT  
Tel: 01460 67481

Chard Machine Knitting Club  
15 Monmouth Court, Chard TA20 1HQ  
Tel: 01460 62531

Rotary Club of Chard  
Mr Robin Williams - Secretary  
c/o 6 Cook Avenue, Chard TA20 2JR  
Tel: 01460 66631  
robinkwilliams@tiscali.co.uk

University of the 3rd Age(U3A)  
Jackie Bridge - Membership Secretary  
Ashfield, Lordleaze Lane, Chard TA20 2HN  
Tel: 01460 67989  
Jacqueline.bridge@btinternet.com

### **DISABILITY GROUPS**

Chard Blind Club "Somerset Sight"  
Miss Hilary Bolitho, Woodcote, Broadway  
Ilminster TA20 9QY  
Tel: 01460 53247  
hcibolitho@bolitho.eclipse.co.uk

Chard & Crewkerne After Stroke Group  
c/o 6 Cook Avenue, Chard TA20 2JR  
Tel: Chris Williams 01460 66631/  
Jenny Fielder 01460 63920

Chard & District Riding for the Disabled  
Ms Marie Parker - Chairman  
Tel: 01460 220411  
marie@greghams.eclipse.co.uk

Chard & Ilminster Heart Care Group  
Mrs Pat Everitt c/o Secretary  
27 Nursery Gardens, Chard TA20 1HH  
Tel: 01460 62591

### **DRAMA, ART & FILM**

Chard Amateur Theatre Society  
c/o Lorraine Marshal  
35 Bubwith Road, Chard TA20 2BW  
Tel: 01460 65062  
lorraineatcats@hotmail.co.uk

Chard Local Kids Society For Music & Drama  
(CLOKS)  
Mrs M Fairey, Folley Farmyard, Dommett TA20 3JL  
Email: maria@cloks.co.uk  
01460 234335  
8-18 years, Crowshute House, Chard  
Saturday 10am to 12 noon  
www.cloks.co.uk

Screen at the Guildhall, David Ricketts  
c/o 3 Duck Lane, Chard TA20 2ES  
Tel: 07941 585823  
satgchard@hotmail.co.uk

The Arts Class  
Mrs Shena Bulcock, Little Lyon Mead,  
High Street, Chard TA20 1QB  
Tel: 01460 61755  
shenab@hotmail.co.uk

### **DANCE & MUSIC**

Chard Folk Dance Group  
c/o Peter David Dudeney, 5 Harper Road  
Crewkerne TA18 8ED  
Tel: 01460 73529 & 01460 61996  
peter@pdudeney.wanadoo.co.uk

Chard Tea Dance  
Roger Moore - Secretary  
2 Woodmead Road, Axminster EX13 5PG  
Tel: 01460 63690/01297 32997  
Rogmoore5@talktalk.net

Line Dancing (Ballroom & Latin) Country Spirit  
Val Curnock, Lyncroft, Touchstone Lane  
Chard TA20 1RB  
Tel: 01460 65007

Meeting Voices Community Choir  
Meet every Wednesday evening Chard Town Hall  
13 The Beacon, Ilminster TA19 9AH  
Tel: 01460 52392  
Sandra244@btinternet.com

The Windwhistle Country Music Club &  
The Windwhistle Line Dance Club  
32 Beckington Crescent, Chard TA20 2BU  
Tel: 01460 65260

### **GARDENING & HORTICULTURAL**

Chard Allotment Holders Association  
Mr Bill Edmonds, 2 Bradfield Way,  
Chard TA20 2BG  
Tel: 01460 61253  
Billandjosie.edmonds@talktalk.net

Chard Gardening Club  
Mr H Walters - Secretary  
44 St Mary's Close, Chard TA20 2EF  
Tel: 01460 61544  
Meet at English Martyrs Church Hall  
2nd Thursday in the month 7.30pm

Combe St Nicholas - Horticultural Society  
Mr Rob Grimmond - Chairman  
Tel: 01460 261234  
combe@combe.ndo.co.uk

## LADIES GROUPS

Chard Ladies Evening Guild  
Mrs Doreen Toms, 2 Montague Way  
Chard TA20 2BY  
Tel: 01460 64502  
Mardon.toms@mypostoffice.co.uk

Chard Woman's Institute  
Mrs K Hodgson - Secretary  
2c Laurel Gardens, Chard TA20 1SZ  
Tel: 01460 61060  
iakhodgson@aol.com

Methodist Women's Fellowship  
Mrs M Izzard, The Manse, Four Elms  
Yarcombe, Honiton EX14 9AU  
Tel: 01404 861166

St Mary's Mother's Union  
Mrs Heather Elphick  
7 Brutton Way, Chard TA20 2HB  
Tel: 01460 63490

Tatworth Lace Group  
Mrs Jill Bond, Higher Coombses  
South Chard TA20 2SY  
Tel: 01460 220677

Tatworth WI  
Mrs Jane Grant  
Tel: 01460 221534

The Inner Wheel Club of Chard  
Mrs Penny Herrick, Springbank, Forton Road  
Chard TA20 2HR  
Tel: 01460 929794  
Edpenherrick1@talktalk.net

## MENS GROUPS

Cerdic Club, 22 Kinforde, Chard TA20 1DT  
Tel: 01460 67486  
thelmahollinghurst@fsmail.net

For Men  
Contact: Andrew Conlan  
Forefront Community Centre  
42 Fore Street, Chard TA20 1QA  
Tel: 01460 66080  
Meet last Friday evening in every month @  
Wetherspools

## MUSEUMS

Chard & District Museum  
Godworthy House, High Street, Chard TA20 1QB  
Tel: 01460 65091  
info@chardmuseum.co.uk  
www.chardmuseum.co.uk

## SERVICE ORGANISATIONS

Royal British Legion Chard Branch  
Mr John Gudge - Chairman  
53 Holyrood Street, Chard TA20 2DN  
Tel: 01460 261989  
Johngudge989@btinternet.com

Royal Naval Association  
Mr R Lovell, 28 Henson Park, Chard TA20 1NG  
Tel: 01460 65362

## SPORT & LEISURE

Avishayes Community Swimming pool  
"Open 50 weeks a year"  
To hire - Tel: 07749 487913

Chard Bowls Club  
Bonds Meadow, Bonds Close, Chard TA20 1ED  
Tel: 01460 63799

Chard Cricket Club  
Mr Nic Coath Hon - Secretary  
c/o 4 Furnham Road, Chard TA20 1AE  
Tel: 01460 61679  
nicoath@lineone.net  
www.chard.play-cricket.com

Chard & District Modellers Club  
Mr J Edge, 37 Clay Lane, Beamster,  
Dorset DT8 3BX  
Tel: 01308 863040

Chard & District Swimming Club  
A Competitive Swimming Club  
Training for 8 years and up at Chard, Axminster  
& Crewkerne pools.  
Secretary/Membership Heather Pullinger  
Tel: 01297 443973  
www.chardswimming.org.uk

Chard Hockey Club  
Elizabeth Sterland - Secretary  
117 Combe Street, Chard TA20 1JH  
Tel: 01460 64404  
EJ\_me@hotmail.com

Chard Karate Club  
Andrew Dare, 6 Bracken Way, Chard TA20 1HS  
Tel: 01460 66629/07770844693  
Andrewj.dare@virgin.net

Cresta Leisure Centre  
c/o Richard Blythe, Zembard Lane  
Chard TA20 1JL  
Tel: 01460 64084  
rblythe@somersetleisure.org.uk or  
Richard\_Blythe@hotmail.co.uk

Chard RFC  
The Park, Essex Close, Chard TA20 1RH  
Tel: 01460 62495

Chard School of TAGB Tae-Kwon-Do  
Nina Anderson (Third Degree Black Belt Instructor)  
Tel:01460 63239/07796 950134  
Classes held at Cresta Sports Centre Mon,  
Tues,Thurs and Friday.

Chard Tennis Club  
Pat St Leger-Harris (Membership secretary)  
Wadeford Manor, Chard TA20 3AU  
Pat.anne.slh@googlemail.com

Chard Town Football Club  
Denning Sports Field, Zembard Lane,  
Chard TA20 1JL  
Tel: 01460 61402

Chard Travel Group  
Mr Eddy Madge, 3 Jubilee Close,  
Chard TA20 2DH  
Tel: 01460 63374  
eddy@madge.eclipse.co.uk

Forton Rangers Football Club  
Mr Adam Smith  
The Parlour, Forton, Chard TA20 2NA  
Tel: 01460 61016  
www.fortonrangers.co.uk

Karate Classes in Chard  
(British Shito-Ryu Karate Association)  
Robert Sergeant Tel: 01460 261881  
Meet every Thursday at Chard Guildhall

Ramblers  
South Somerset Ramblers Association  
Mr D.Lucas, Publicity Officer  
18 Sandhurst Road, Yeovil, BA20 2LG  
01935 426842

Senior Friendship Group (Rendezvous)  
Mrs Mary Hedges  
29 Budworth Road, Chard TA20 2BW  
Tel: 01460 61333  
Meet every Tuesday 2pm-4pm at Chard Baptist  
Church

Somerset Skills & Learning  
Rose Mercer  
The Boden Centre, Chard TA20 2AX  
Tel: 01460 63900  
gmear@somerset.gov.uk

Tatworth & District Floral Club  
Meet at Tatworth Memorial Hall  
Kents Road, Tatworth, Chard TA20 2QW  
Ann Gough- Secretary Tel:01460 220348  
annpatgough@btinternet.com

Tuesday Badminton Club  
Mr Peter New - Membership Secretary  
For information on joining contact Peter on  
Tel: 01823 480620  
Peternew047@btinternet.com

**YOUNG PEOPLE'S GROUP**  
Chard Platoon Army Cadets  
Somerset ACF(Drill Hall)  
Furnham Road, Chard TA20 1AE  
Tel:01460 63671

Air Training Corps  
Mrs J Morse  
Woodside Cottage, Post Office Lane  
South Chard, Chard. TA20 2PQ  
Tel: 01460 220591

Chard 1st Scouts Group  
Meet every Monday at Tatworth Memorial Hall  
Tel: Paul Masters 01460 67452

Chard Methodist Friday Club  
(Groups for 7-11s & 11-14)  
Meet at Chard Methodist Church  
Fore Street, Chard  
Tel: 01460 239075/63368

Chard Young Peoples Centre  
Essex Close, Chard TA20 1PZ  
Tel: 01460 62180 (all messages will be picked up  
Wednesday am)  
To hire contact (Cathie or Shirley) 01460 68724

Girl's Brigade & Boy's Brigade  
(Uniformed groups ages 5-18)  
Meet at Chard Methodist Church  
Fore Street, Chard  
Contact: Girls 01460 53951/Boys 01460 220181

Guides, Brownies & Rainbows  
District Commissioner Jeannie Sterland  
Chard and District Guides  
Stanford House, Combe Street, Chard  
Tel: 01460 64404

Manor Court Beavers, Clubs & Scout Group  
Mr R Hollick  
Storeyville, Whitegate, Forton, Chard TA20 4HE  
Tel: 01460 220595

St Mary's Youth Group  
St Mary's Church Rooms  
Ages 11 to 18 meet every Friday evening at 7.30pm  
Tel: 01460 67867 www.stmaryschard.co.uk



# Barleymow's

FARM SHOP, RESTAURANT & DELL

All-day breakfasts, lunch and tea.  
Summer Fun in the Maize Maze and  
Farm Adventure Playground.

Mon-Sat: 9am-5pm Sun: 9am-4pm

Tel: 01460 62130

[www.barleymowsfarmshop.co.uk](http://www.barleymowsfarmshop.co.uk)

1/2 mile west of Chard on the A30



# chard

Memphis

